



VF680

Multi-function Face Identification Terminal

VF680 is a face identification time&attendance and access control terminal, which can connect with 3rd party electric lock, door sensor and exit button etc. With the latest face identification algorithm and streamlined technology. It can hold 3000 face templates without dividing into groups. Communicating via Wi-Fi, Ethernet and USB(host), it ensures a smooth connection and data transfer. Amazing verification speed and intuitive operation process make it popular. Elaborately designed and finely processed, it match your slap-up office perfectly

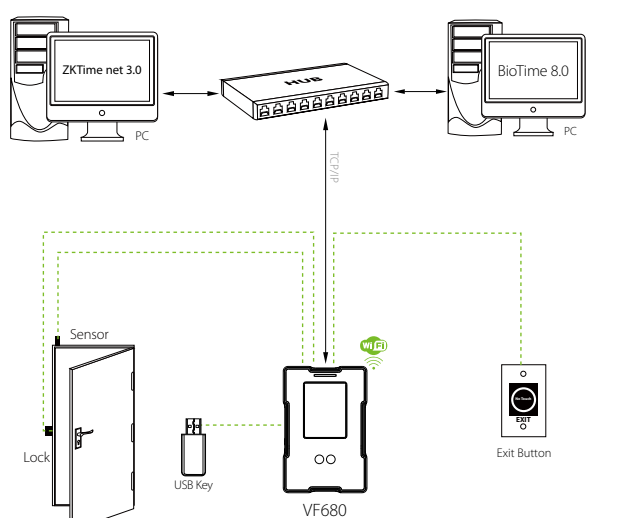
Features

- Elegant ergonomic design
- Wi-Fi, Ethernet and USB host communication
- Professional ZKTeco face identification connection
- 3000 face capacity
- 2.8 inch capacitive touch screen
- Optional Mifare card module
- Infra-red optical system enables user-identifications in a wide range of light environment

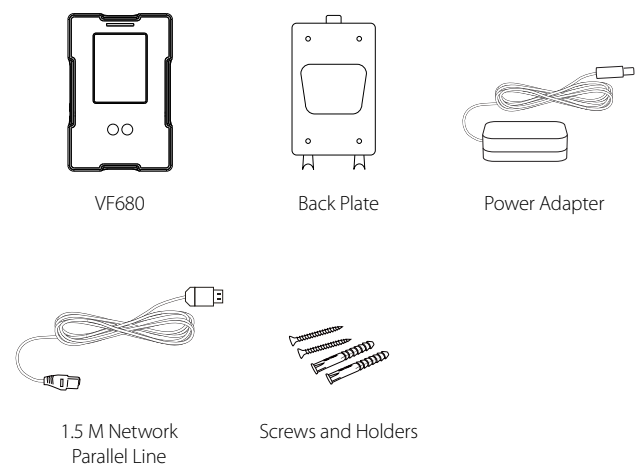
Specifications

| | |
|-----------------------|---|
| Display | 2.8 inch capacitive touch screen |
| Face Capacity | 3,000 |
| Card Capacity | 50,000/100,000 |
| Logs Capacity | 100W |
| Communication | TCP/IP, USB host, WiFi(optional) |
| Standard Function | ID card, Automatic Status Switch, Self-Service Query, Work Code, T9 Input, 9 Digit User Id, DST, Scheduled-bell and Short Message, 3rd party electric lock, door sensor, and exit button, alarm |
| Optional Function | Mifare Card,ADMS,WiFi |
| Power Supply | 12V/1.5A |
| Verification Speed | ≤1S |
| Operating Temperature | 0-45°C |
| Operating Humidity | 20%-80% |
| Dimensions | 106×160×36mm(L×H×D) |

Configuration



What's in the Box



V1.0 2019.11.20