

# iVMS-4200

## Overview

iVMS-4200 is versatile video management software for the DVRs, NVRs, IP cameras, encoders, access control devices, security control panels, video intercom devices, decoders, VCA devices, etc. It provides multiple functionalities, including real-time live view, video recording, remote search and playback, file backup, alarm receiving, etc., for the connected devices to meet the needs of small and medium-sized projects.

With the flexible distributed structure and easy-to-use operations, iVMS-4200 client software is widely applied to the surveillance project of financial, public security, military, telecommunications, transport, electricity, education, water conservancy industries, etc.

## Main Features

### Live View

- View settings and instant playback
- Main/auxiliary screen live view
- Up to 64-window division for standard screen, and 48-window division for the wide screen
- Custom window division configurable
- Live view in fisheye mode for fisheye camera
- Master-slave tracking
- Resuming the latest live view status after client restart

### Recording

- Recording both main stream and sub-stream for playback
- Remote manual recording
- Recording schedule for continuous recording, event recording and command recording
- Storing alarm pictures on Storage Server
- Providing SAN and CVR configuration for CVR device
- Video file overwritten and expired video file deleting

### Alarm Management

- Camera linkage and multiple linkage actions
- Device arming and alarm output control
- Alarm configuration for camera event, alarm input, zone event and device exception
- Searching and exporting the linked pictures of alarm logs
- Audible warning and pop up image when alarm triggered
- Custom alarm sound as desired.

### Playback

- Local and remote playback
- Instant playback, normal playback, alarm input playback, event playback, ATM playback, VCA playback, and fisheye playback.
- Up to 16-ch synchronous playback
- Locate the playback time accurately
- Skipping the unconcerned video during VCA playback
- Searching the video files which contain POS information
- Providing Player in the installation directory to view the downloaded video file
- Merging the video files when downloading by date
- Downloading video files for multiple cameras at the same time

### Access Control and Video Intercom

- Managing video intercom and access control in one module
- Linking cards, fingerprints, and face picture to person and setting permissions when adding a person
- New design and interaction for time and attendance: Providing department schedule, multiple shift schedules, and various statistics
- Real-time alarm management for added access control devices
- Subscribing alarm that the client can display in real-time alarm management when it is triggered
- Alarm linkage with added cameras, including pop-up live view and captured picture
- Adding access control point as hot spot on E-map and viewing the video of the linked camera
- Adding Elevator Controller for management and control
- Configuration wizard for access control and time and attendance

### Security Control Panel

- Real-time alarm management for added security control panels
- Subscribing alarm that the client can display in real-time alarm management when it is triggered
- Acknowledging the received alarm, viewing the alarm on E-map, etc.
- Alarm linkage with added cameras, including pop-up live view, captured picture
- Adding zone as hot spot on E-map and viewing the video of the linked camera
- Adding Pyronix control panel for management and control
- Configuration wizard

### Statistics

- Data statistics of heat map, people counting, counting, road traffic, face retrieval, license plate retrieval, behavior analysis, and face capture
- Showing large picture of face retrieval, license plate retrieval, and behavior analysis and the pictures can be exported for local storage

### Network

- Encoding devices, decoding devices, Hik-Connect devices, access control devices, security control panels, video intercom devices, storage servers, stream media servers connectable
- Checking device's online users
- NTP protocol for time synchronization
- Searching the active online devices
- Adding devices which have been added to the Hik-Connect account
- Adding online device which support Hik-Connect to the Hik-Connect account
- For added Hik-Connect device, supporting live view, normal playback, PTZ control, two-way audio, receiving alarm, stream auto-switch, etc.
- Adding devices by HiDDNS and IP Server; batch importing devices
- Generating QR code for encoding devices to add to the mobile client
- Two-way audio and broadcast function

## General

- Applied in local area network and wide area network
- H.264, H.264+, H.265, and H.265+ video encoding formats
- E-map function
- Remote configuration for added devices
- User permission management
- Creating a password to activate the device. For device which supports Hik-Connect, enabling Hik-Connect service when activating it.
- Resetting device password
- Hardware decoding for live view and playback
- Linkage between video surveillance and non-video surveillance (access control, video intercom, and security control panel)

## PTZ Control

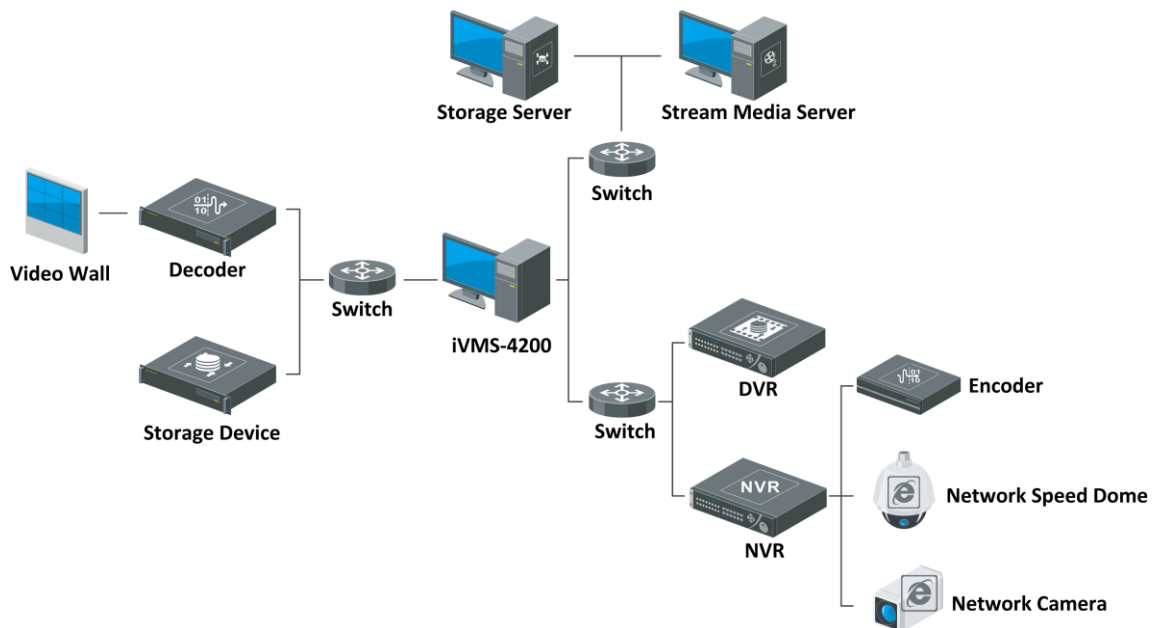
- Remote PTZ control, preset, patrol, and pattern settings
- 3D positioning, auxiliary focus, and wiper function
- Displaying analog speed dome's local menu via PTZ control panel
- PTZ control of one-touch patrol and one-touch park

## Backup

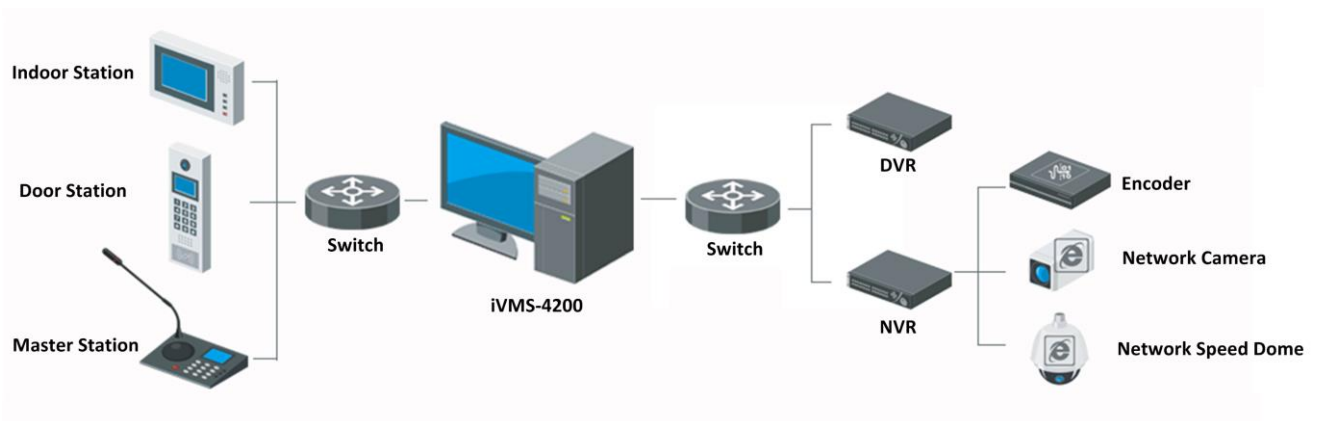
- Downloading video files to PC
- Log search and backup
- Importing and exporting the configuration file
- Auto backing up database according to the configured schedule

## Typical Application

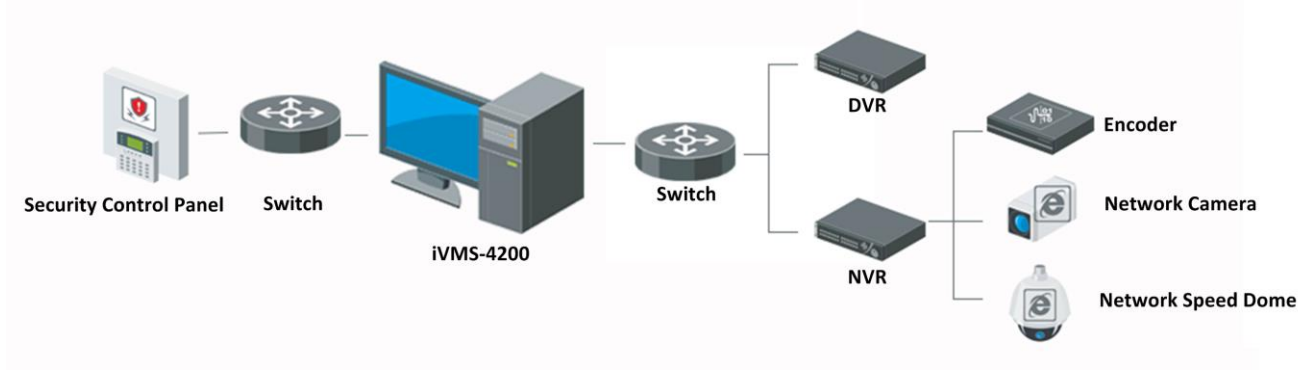
### Application for Video Surveillance



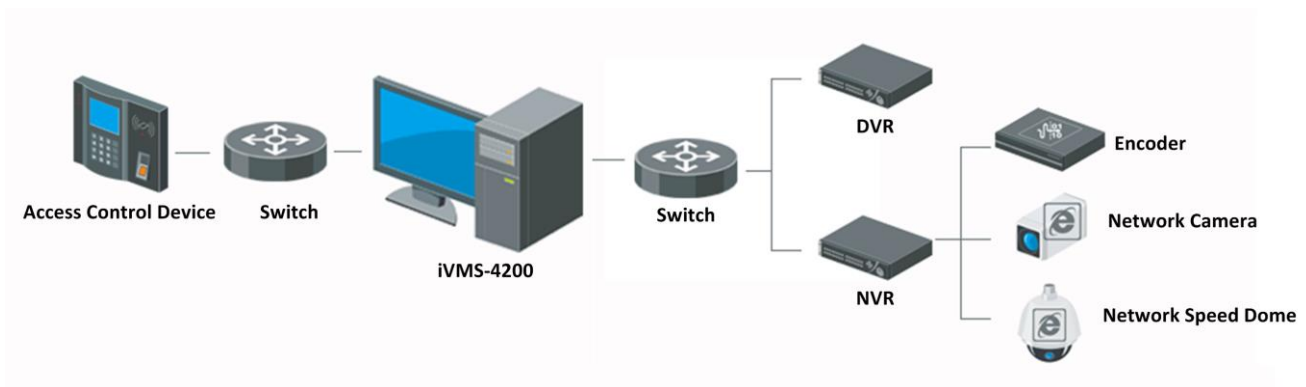
### Application for Video Intercom



## Application for Security Control Panel



## Application for Access Control



## System Requirements

### Client Requirements

Recommended	Processor	Intel® Xeon® E3-1226 V3 @ 3.30GHz
	Memory	8 GB of RAM
	Operating System	Microsoft® Windows 7 (64-bit)
	Video Card	Intel® HD Graphics P4600
High Performance	Processor	Intel® Core™ i7-6700K @ 4GHz
	Memory	16 GB of RAM
	Operating System	Microsoft® Windows 7 (64-bit)
	Video Card	NVIDIA GeForce GTX1070

### Maximum Number of Cameras Viewed per Client under Different System Requirements (Software Decoding)

Encoding Format	Resolution	Bit Rate (Mbps)	Frame Rate (fps)	Maximum Number of Cameras Viewed Simultaneously	
				Recommended	High Performance
H.264	1080p	6	30	7	15
	8 MP	16	30	2	4
H.264+	720p	1	30	19	32
	1080p	3	30	8	15
	3 MP	4	30	5	12

H.265	720p	1	30	12	28
	1080p	3	30	5	11
	3 MP	4	30	3	8
H.265+	720p	0.5	30	14	30
	1080p	1	30	6	11
	3 MP	2	30	4	9

### Maximum Number of Cameras Viewed per Client under Different System Requirements (Hardware Decoding)

Encoding Format	Resolution	Bit Rate (Mbps)	Frame Rate (fps)	Maximum Number of Cameras Viewed Simultaneously	
				Recommended	High Performance
H.264	1080p	6	30	25	25
	8 MP	16	30	6	6
H.264+	720p	1	30	45	45
	1080p	3	30	24	23
	3 MP	4	30	19	17
H.265	720p	1	30	N/A	45
	1080p	3	30	N/A	23
	3 MP	4	30	N/A	15
H.265+	720p	0.5	30	N/A	45
	1080p	1	30	N/A	22
	3 MP	2	30	N/A	15

#### Notes:

- For the field of N/A, the video card under the recommended system requirement does not support H.265 or H.265+.
- The above parameters are estimated and for reference only. Under the same resolution and frame rate, the bitrate of different camera manufacturers may be different. Moreover, the decoding performance may also be different for different manufacturers.

### Server Requirements (Storage Server and Stream Media Server)

Minimum	Processor	Intel® Core™ 2 Duo E6850 3.0 GHz
	Memory	4 GB of RAM
	HDD	80 GB Hard Drive
	NIC	100/1000 Mbps Ethernet Network Interface Card
	Video Card	Standard SVGA Video Card
Recommended	Processor	Quad Core Intel® Xeon® E5640 2.66 GHz
	Memory	16 GB of RAM
	Operating System	64-bit Operating System
	HDD	80 GB SATA II Hard Drive
	NIC	GbE Network Interface Card
	Video Card	Standard SVGA Video Card

## Specifications

<b>Model</b>		iVMS-4200	
<b>Database</b>		SQLite	
<b>Client</b>	<b>General</b>	<b>User</b>	Support up to 50 users and one super user
		<b>E-map</b>	Support up to 256 maps
		<b>Encoding Device</b>	Support up to 256 encoding devices
		<b>Decoding Device</b>	Support up to 64 decoding devices
		<b>Group</b>	Support up to 256 groups Support up to 256 channels for each group
		<b>Channel</b>	Support up to 1024 channels for all groups
		<b>Storage Server</b>	Support up to 16 Storage Servers
		<b>Stream Media Server</b>	Support up to 16 Stream Media Servers
	<b>Video</b>	<b>Live View</b>	Support up to 64-ch live view at a time
		<b>Auxiliary Screen Preview</b>	Support up to 4 auxiliary screens for live view
		<b>Playback</b>	Support up to 16-ch playback at a time
		<b>Synchronous Playback</b>	Support up to 16-ch synchronous playback
		<b>Download</b>	Support up to 16 downloading tasks at a time
	<b>Access Control</b>	<b>Person/Room</b>	Support up to 10,000 persons/rooms Support up to 5 cards for each person/room
		<b>Organization</b>	Support up to 10 hierarchies
		<b>Fingerprint</b>	Support up to 10 fingerprints per person, and 100,000 fingerprints in total
		<b>Access Control Device</b>	Support up to 16 access control devices
		<b>Access Control Point</b>	Support up to 64 access control points
		<b>Template</b>	Support up to 255 templates
		<b>Permission</b>	Support up to 16 access control permissions
		<b>Door Station</b>	Support up to 16 door stations
		<b>Indoor Station/Master Station</b>	Support up to 512 indoor stations or master stations
		<b>Time and Attendance Data</b>	Retention period of attendance result: one year Retention period of original data: three months
<b>Shift</b>		Support up to 64 shifts	
<b>Attendance Report</b>		Support 18 reports: check-in/out correction report, leave and business trip report, attendance summary, attendance details report, abnormal attendance report, overtime report, card swiping log report, total overtime monthly report, overtime details monthly report, attendance monthly report, start/end-work time report, department attendance report, valid card swiping record report, attendance daily report, first check-in and last check-out report, continuous absence, continuous early leave, and continuous early late report	
<b>Security Control Panel</b>	<b>Security Control Panel</b>	Support up to 256 security control panels	
	<b>Zone</b>	Support up to 2048 zones	
<b>Storage Server</b>	<b>User</b>	Support up to 32 users	
	<b>Recording Performance</b>	Support up to 64-ch × 2 Mbps at a time	
	<b>VOD Performance</b>	Support up to 64-ch × 2 Mbps at a time	
	<b>iVMS-4200 Client</b>	Support up to 128 iVMS-4200 clients connected to the Storage Server	
<b>Stream Media Server</b>	<b>Incoming/Outgoing Stream</b>	Support up to 64-ch incoming video stream	
		Support up to 200-ch outgoing video stream	